



User Guide

Konftel 50 Conference Unit

UK English

Conference phones for every situation



OmniSound®

This product is equipped with OmniSound®, the crystal clear sound.



Hereby, **Konftel AB** declares that this conference unit is in compliance with the essential requirements and other relevant provisions of Directive 1999/5/EC.

WARNING: To reduce the risk of fire or shock hazard, do not expose this product to rain or moisture.



CAUTION



**RISK OF ELECTRIC SHOCK
DO NOT OPEN**

CAUTION: TO REDUCE THE RISK OF ELECTRICAL SHOCK, DO NOT REMOVE COVER OR BACK. NO USER-SERVICEABLE PARTS INSIDE. REFER SERVICING TO QUALIFIED PERSONNEL.



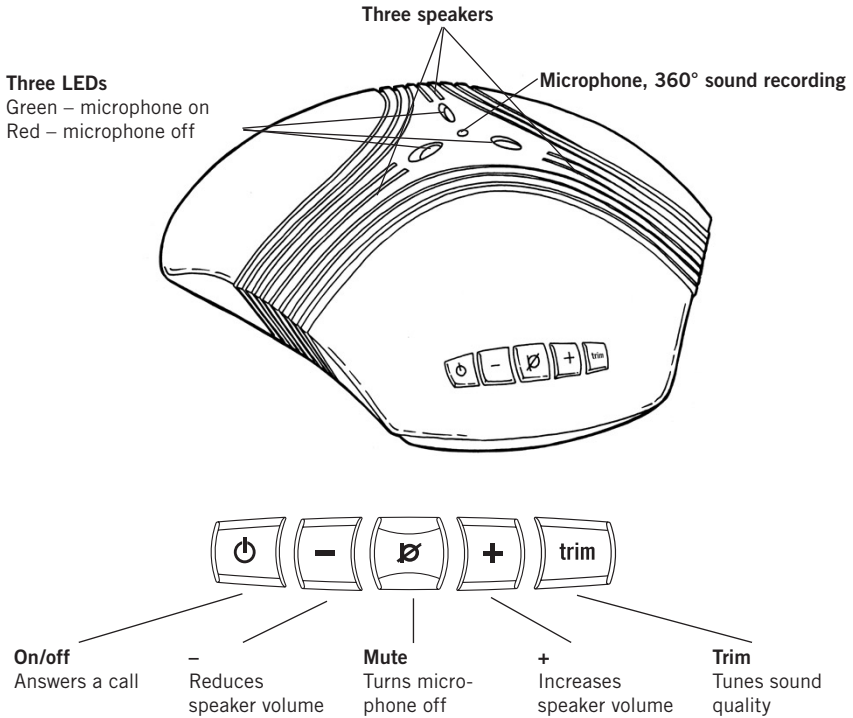
The lightning symbol is intended to alert you to the presence of uninsulated dangerous voltage within this product's enclosure that might be of sufficient magnitude to constitute a risk of electric shock. Do not open the product's case.



The exclamation symbol is intended to inform you that important operating and maintenance instructions are included in the literature accompanying this product.

Description	2
Maintenance	3
Using a system telephone	4
Connecting and settings	4
Answering a call	6
Making a call.....	6
During a call	6
Ending a call	7
Using a computer	8
General.....	8
Connecting via a sound card	8
Other connection options	12
Connecting a computer using a USB Adapter (accessory)	12
Connecting to a mobile or DECT telephone via a cable (accessory)	13
Troubleshooting	14
Connection	14
Sound	15
Technical data	16
Accessories, Service and guarantee	18
Order numbers for accessories.....	18
Service and guarantee.....	18

DESCRIPTION

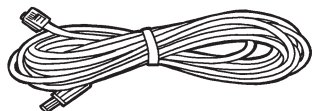
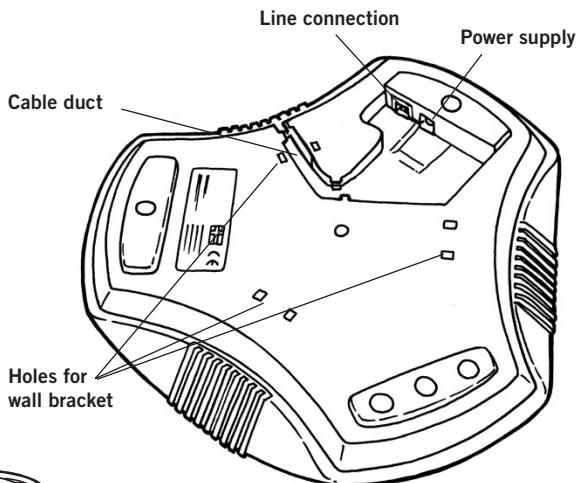


Konftel 50 is a conference unit for connecting to existing fixed system telephones, DECT telephones, mobile phones or computers. Konftel 50 has a omnidirectional, highly-sensitive microphone and three speakers which, together with Konftel's OmniSound® provide optimal sound quality and maximum reduction of room echo, even when the person speaking is standing at a slight distance from the unit.

Konftel 50 has five buttons. The most common functions for power, speaker volume and mute are obvious, but all the buttons have other functions for activating various special functions and settings. Therefore, you should read the sections of the handbook that deal with the connections you intend to use so that you do not miss any important options.

Plug adapter

Connection cable electricity–mains socket

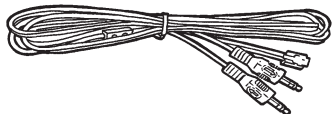


Connection cable electricity, 6 m
(Konftel 50–plug adapter)

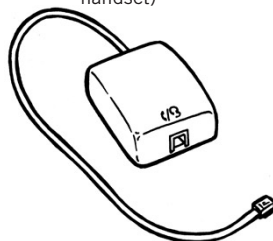
Switchbox
(Konftel 50–telephone handset)



Connection cable telephone, 3 m
(Konftel 50–switchbox)



Connection cable computer, 1.5 m
(Konftel 50–computer)



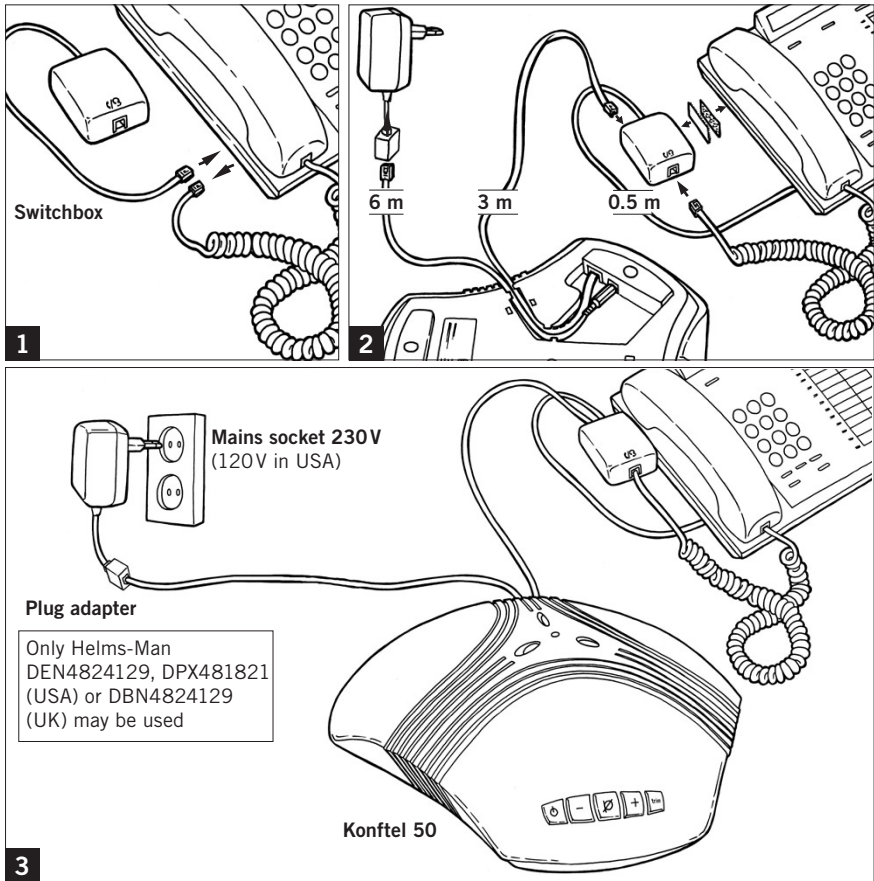
Konftel's website www.konftel.com offers suggestions for various applications and accessories for the Konftel 50 and other products.

If the GSM network has reduced functionality, e.g. due to poor coverage, the sound quality may be affected. This is not due to the Konftel 50.

MAINTENANCE

Clean the equipment with a soft, dry cloth. Never use liquids.

USING A SYSTEM TELEPHONE



CONNECTING AND SETTINGS

- ⇒ Connect Konftel 50 to the telephone via the switchbox as per the pictures above.
- ⇒ Plug Konftel 50 in using the power adapter as shown in the picture.
- ⇒ Make a test call to check that everything works and to adjust the microphone setting.

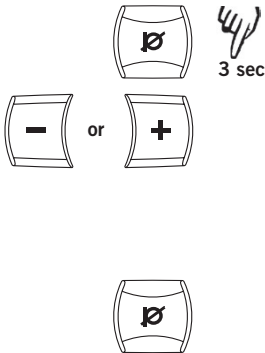
Please note that the selector switch for different types of telephone is located on the bottom of the switchbox. See troubleshooting for more information if something does not work.

Using a headset instead of the handset

You can connect a headset to the switchbox instead of a handset. Please note that the headset must be suitable for the telephone system.

Adjusting the microphone volume

The microphone volume can be adjusted during the call, but to avoid disturbing the call, it may be best to adjust it during a test call following connection. There are 5 volume settings.



⇒ Press and hold the **mute** button for about 3 seconds until the LEDs start to flash and you hear a tone.

⇒ Increase the microphone volume using the + and reduce it using -.

Adjust the microphone volume one level at a time until you can hear well in the other end. Please note that too high a level may cause echoes and feedback.

⇒ Press the **mute** button to conclude setting the selected microphone volume.

The volume setting is saved in the event of a power-failure.

ANSWERING A CALL



- ⇒ Answer the call using the telephone in the normal way.
- ⇒ Press the **on/off** button to switch on Konftel 50 and change to speaker call.
- ⇒ Place the handset to one side – it is now disconnected.

MAKING A CALL



- ⇒ Lift the handset and dial the number.
- ⇒ Press the **on/off** button to switch on Konftel 50 and change to speaker call.
- ⇒ Place the handset to one side – it is now disconnected.

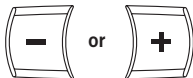
DURING A CALL

Transferring a call between Konftel 50 and a telephone



- ⇒ Press the **on/off** to switch off Konftel 50 and transfer the call back to the telephone.

Adjusting the speaker volume



- ⇒ Increase the speaker volume using **+** and reduce it using **-**.

There are 15 volume settings. Please note that the telephone's volume setting also affects the speaker volume in Konftel 50.



Mute function

⇒ Press the **mute** button to turn off the microphone.

The LEDs change from green to red. The other party cannot hear what you are saying.



⇒ Press the **mute** button again to switch the microphone back on.

Tuning the sound manually

Konftel 50 adjusts itself automatically when you switch it on to eliminate echo. It also senses changes in the room and continually adapts during the call. If, despite this, you still experience reduced sound quality, Konftel 50 can be tuned manually at any time.



⇒ Press **trim**.

A short noise is heard.

ENDING A CALL



⇒ Hang up the handset.

⇒ Press the **on/off** button to turn off Konftel 50.

USING A COMPUTER

GENERAL

Konftel 50 functions as a speaker and microphone for all computers that have a microphone input and a line output for sound. Konftel 50 can also be connected via a USB sound card (see page 12).

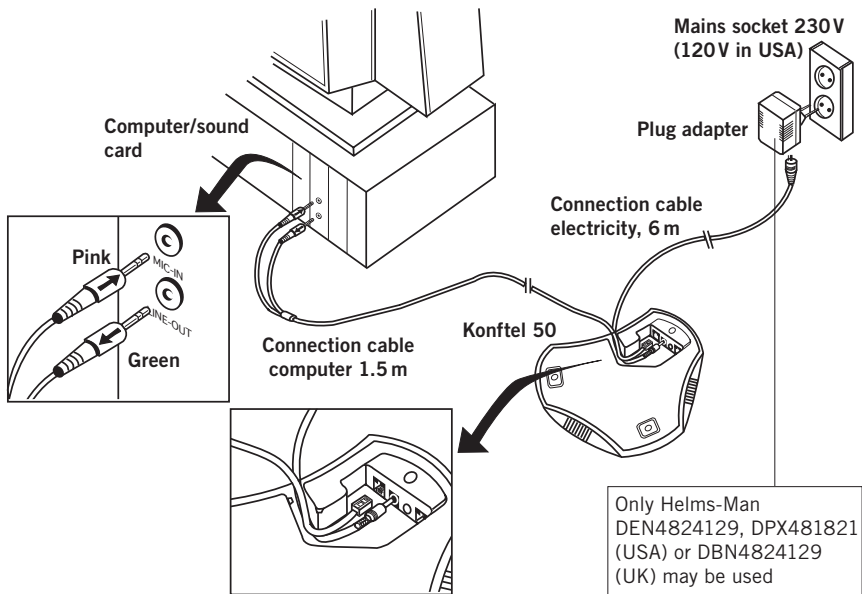
Use

You can use Konftel 50 for programs that communicate over the Internet (e.g. Skype). You make, answer and end calls in the program. Konftel 50 functions as a speaker and microphone when it is switched on.

The buttons for mute and manual tuning also function when connected to a computer (see page 7).

CONNECTING VIA A SOUND CARD

Connect in the order shown on the next page.



- ⇒ Connect Konftel 50 to the sound card using the accompanying Y-cable as per the picture.

LINE OUTPUT ----- OUT --- Green
 MICROPHONE INPUT - IN ----- Pink

- ⇒ Plug Konftel 50 in using the power adapter as shown in the picture.



- ⇒ Start the computer and switch on Konftel 50 (the **on/off button**).

- ⇒ Check and adjust the computer's sound and volume settings as per the next section.

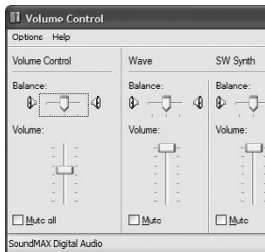
Checking the sound unit in Windows

There follows an example of how such items appear on a computer with Windows XP. Please note that it may look different on your computer. In a Macintosh you open the computer's system settings to select sound inputs and adjust sound levels.



- ⇒ Open **Properties** for **Sound and Audio Devices**. (Right click on the speaker symbol in the Activity field and select **Adjust Audio Properties** from the quick menu or use the start menu: **Start > Control panel > Sound and Audio Devices**.)

- ⇒ Click on the **Audio** tab and check that the computer's **sound card** is selected as the standard unit. Otherwise you must actively select the computer's sound card in your application (e.g. Skype®) each time you re-start the computer.



Adjust the speaker volume in Windows

- ⇒ Click on the **Volume...** button under **Sound playback** on the tab **Audio**.
- ⇒ Adjust the sound level for **Volume Control** so that it is between the intermediate and maximum level.

This setting adjusts the line output level from the computer. A low sound level here means that you must increase the volume on Konftel 50 to the maximum level, which may lead to fuzzy sound and a low sound level. A high sound level means that the volume on Konftel 50 can be set to an intermediate setting and still produce excellent sound through the speakers.

- ⇒ Check the sound level when you playback sounds (any sound source in the computer). Please note that Konftel 50 must be switched on.

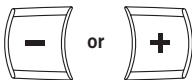
Note that you also have separate volume controls for various sound sources in the computer. These volume controls apply to playback from each sound source. Choose **Mute** for microphone input if you do not want to hear your own voice through the speakers. A high volume may cause echoes and feedback.

Adjusting the speaker volume on Konftel 50

If necessary, the volume on Konftel 50 can be adjusted during a call.

- ⇒ Increase the speaker volume using **+** and reduce it using **-**.

There are 15 volume settings.



Adjusting the microphone volume in Windows



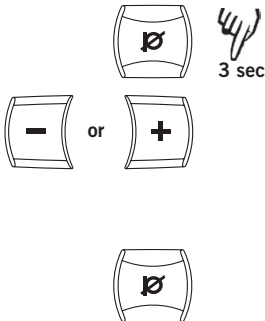
⇒ Click on the **Volume...** button under **Sound recording** on the tab **Audio**.

⇒ Adjust the microphone input between the intermediate and maximum level. Connect a call and adjust the volume if required.

It is best to use the communication program you intend to use with Konftel 50 when testing the microphone volume.

Adjusting the microphone volume on Konftel 50

Adjust the microphone volume on Konftel 50 if required. There are 5 volume settings. Please note that Konftel 50 must be switched on.



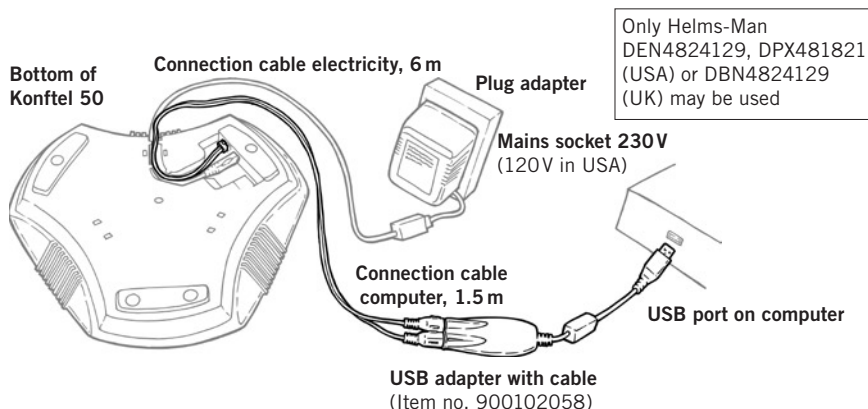
⇒ Press and hold the **mute** button for about 3 seconds until the LEDs start to flash and you hear a tone.

⇒ Increase the microphone volume using **+** and reduce it using **-**.

Adjust the microphone volume one level at a time until the correct level is achieved.

⇒ Press the **mute** button to conclude setting the selected microphone volume.

OTHER CONNECTION OPTIONS

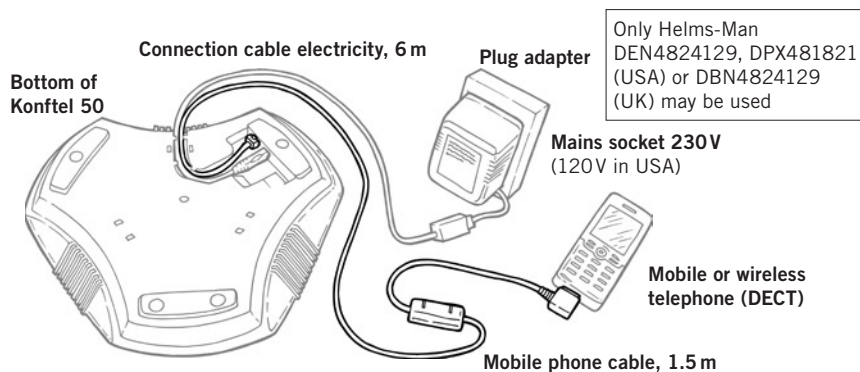


CONNECTING A COMPUTER USING A USB ADAPTER (ACCESSORY)

The USB adapter functions as a sound card in a computer without inputs and outputs for sound.

- ⇒ Connect the USB adapter to Konftel 50 as shown in the picture.
Green plug --Output labelled SPK on USB adapter
Pink plug ----Output labelled MIC on USB adapter
- ⇒ Connect the USB adapter to a USB port on the computer as shown in the picture.
- ⇒ Plug Konftel 50 in using the power adapter as shown in the picture.
- ⇒ Check the sound properties and adjust the sound volume in the same way as for a computer with built-in inputs and outputs for sound (see pages 9–11).

Please note that you must ensure that a **USB headset** is specified as the standard unit. Otherwise you must actively select USB headset as a sound unit in your application (e.g. Skype®) each time you re-start the computer.



CONNECTING TO A MOBILE OR DECT TELEPHONE VIA A CABLE (ACCESSORY)

The Konftel 50 can be connected to a GSM or wireless DECT telephone using an accessory cable, as illustrated. Cables are available for most models on the market. Visit www.konftel.com for more information on accessories.

- ⇒ Plug Konftel 50 in using the power adapter as shown in the picture.
- ⇒ Connect the telephone to Konftel 50 as shown in the picture.
- ⇒ Adjust the microphone and speaker volume in the same way as when connecting to system telephones (see pages 5–6).

Use

See pages 6–7 for descriptions of how to make and answer calls and how the mute and tuning functions work.

TROUBLESHOOTING

A number of problems that may arise when connecting and using Konftel 50 are described below.

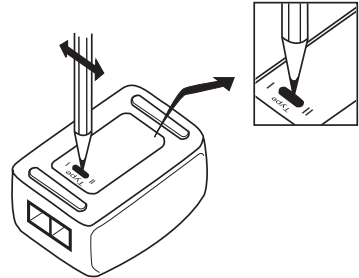
CONNECTION

System telephone via switchbox

1. Is Konftel 50 correctly connected? See the instructions for connecting the telephone.
2. Have you added extension cords to the system? Remove them and re-connect to see if the system is working.
3. Check the position of the selector switch on the bottom of the switchbox. Select position **I** or **II** depending on which system telephone you are connecting Konftel 50 to.

Manufacturer	Type of switchboard	Selector switch position
ERICSSON	MD110	I
	BUSINESS PHONE	I
NORTEL	MERIDIAN 1	I
	COSMOS	I
PHILIPS	SOPHO	II
	ERGOLINE	I
ALCATEL	4200	I
	4400	I
SIEMENS	HIPATH	I
	HICOM	I

Manufacturer	Type of switchboard	Selector switch position
ERICSSON	MD110	I
	BUSINESS PHONE	I
NORTEL	MERIDIAN 1	I
	COSMOS	I
PHILIPS	SOPHO	II
	ERGOLINE	I
ALCATEL	4200	I
	4400	I
SIEMENS	HIPATH	I
	HICOM	I



For other types of switchboard, try position I first, and then position II.

Computers

If a call can be heard via the computer's headset or built-in speaker, but not via Konftel 50, check that the software and sound card can handle full duplex.

SOUND

No sound

1. Are the LEDs red? If so, the mute button is activated. Press to deactivate.

Poor sound quality, echo

1. Check the position. The unit is intended to stand flat on a table. Avoid moving the unit around during a call. Do not place the unit too close to a wall or underneath objects such as lampshades or pot plants.
2. Tune Konftel 50 manually. See instructions for manual tuning.
3. Is the volume correctly adjusted? See the instructions for adjusting the volume setting for the microphone.
4. Is the other party using a conference unit, sound card or software that cannot handle full duplex?
5. When the unit is connected to a computer, radio frequency interference may cause discernible sound. The sound will end when the interference stops.

TECHNICAL DATA

Konftel 50

Power supply:	Transformer 12 V DC/230V AC, 700 mA (Europe) Transformer 12 V DC/120V AC, 700 mA (USA)
Inputs:	Analogue line in/out, modular 6/6 Rec (speaker) -10 dBV (adjustable) Broadcast (microphone) -30 dBV (adjustable)
Speaker volume:	Adjusts to 15 levels
Microphone volume:	Adjusts to 5 levels
Room echo reduction:	208 ms
Line echo reduction:	38 ms
Environment:	Reception area <30 m ² Reverberation time in room <500 ms Background noise <45 dBA Temperature range: 0–40° C
Electrical safety:	UL60950-1 CAN/CSA C22.2 No. 60950 EN60950
RF/EMC:	EN 55022 : 1998+A1 : 2000 EN 61000-3-2 : 2000 EN 61000-3-3 : 1995 EN 55024 : 1998+A1 : 2001 FCC Part 15 Certificate
Telecom:	FCC Part 68 Registration IC CS-03
Dimensions:	Diameter 232 mm
Weight:	700 grams

Switchbox

Input telephone handset:	modular 4/4
Input Konftel 50:	Cable, modular 6/6
Output telephone:	Cable, modular 4/4. The contact for connecting a switchbox to a system telephone may only be connected to SELV current in accordance with SS-EN60950
Compatibility:	Can be connected to most system telephones on the market

Computer cable

Y-cable: 1 x modular 6/4, 2 x Tele 3.5 mm. Contact for connecting a Konftel 50 to a computer may only be connected to SELV current in accordance with SS-EN60950

USB adapter for sound (accessory)

USB connection: USB 1.1 Full-speed

System req. PC: Pentium >200MHz, min 256 MB RAM, spare USB port

ORDER NUMBERS FOR ACCESSORIES

Item no.	Designation
9146030	Wall mounting bracket
900102058	USB adapter for sound
900102070	Soft bag
900103328	Extension cord telephone, 10 m
900103339	Extension cord electrical, 10 m
	Connection cables GSM/DECT see www.konftel.com , under Accessories Konftel 50

SERVICE AND GUARANTEE

In the first instance contact your Konftel retailer if your conference telephone needs servicing.

See the American User Guide for guarantee terms and information on American FCC and Canadian IC norms. Contact Konftel support for more information.

KONFTEL support

+46(0)90-706 489 (Monday–Friday 08.00–17.00)

E-mail: info@konftel.com

USA and Canada:

+1-866-606-4728 (Monday–Friday 08.00–17.00)

E-mail: konftel.usa@konftel.com

Konftel is a leading company within loudspeaker communication and audio technology. We develop and sell products and technology for telephone meetings based on cutting-edge expertise within acoustics and digital signal processing. Characteristic of our products is that all conference telephones contain the same high quality audio technology – OmniSound® – providing crystal clear sound. Learn more about Konftel and our other products on **www.konftel.com**

Developed by Konftel AB
Box 268, SE-901 06 Umeå, Sweden
Phone: +46 90 706 489 Fax: +46 90 131 435
E-mail: info@konftel.com Web: www.konftel.com
